

1495



UNIVERSITY OF  
ABERDEEN

# DOORS OPEN DAY ABERDEEN

Get into buildings  
Saturday 7 September 2019

The Seven Incorporated Trades of Aberdeen

DOORS  
OPEN  
DAYS 2019

30  
YEARS

FREE ENTRY

# Welcome...

to **Doors Open Day 2019!** Scotland's largest free festival that celebrates heritage and our built environment. It offers free access to over a thousand venues across the country throughout September every year. The aim of Doors Open Day is to ensure that Scotland's built heritage, new and old, is made accessible.

In Aberdeen we have a great programme with lots of new buildings and events across the city. Drop into the Fire Station and take part in their family friendly activities. Be sure to make it along to the Institute of Medical Science where we have partnered with TechFest to bring you a day of family friendly hands-on science and fun. Step out of this world in the Planetarium at NEScol, where you can also view their training restaurant and hair dressing salon – a must for the day.

To learn more about the history of Aberdeen and its buildings download more information here [www.aagm.co.uk/Heritage/Heritage-Trails.aspx](http://www.aagm.co.uk/Heritage/Heritage-Trails.aspx). Also download the free app *Discover: Old Aberdeen* to your android or iPhone.

Doors Open Day takes place throughout Scotland and is coordinated nationally by the Scottish Civic Trust. Please visit [www.doorsopendays.org.uk](http://www.doorsopendays.org.uk) for more information. Thanks this year are due to Aberdeen City Council and of course to all the people who give up their time to make these fantastic buildings available.

Doors Open Day in Aberdeen is Saturday 7 September. Only one building, Aberdeen Synagogue, will be open on Sunday 8 September.

PLEASE NOTE ALL BUILDINGS ARE OPEN FROM 10am to 4pm, UNLESS OTHERWISE STATED. Where known, date of construction and architect are indicated.

Last minute alterations to this programme may be unavoidable, follow us on

 [www.facebook.com/aberdeendoorsopenday](https://www.facebook.com/aberdeendoorsopenday) and check

 [www.doorsopendays.org.uk](http://www.doorsopendays.org.uk) for up-to-date information.

Please take care when visiting buildings, which you do at your own risk. Neither the Local Area Coordinator for the Scottish Civic Trust nor the building owners take responsibility for any accidents or damage.



## Key to entries

- W** Wheelchair Access
- GT** Guided Tours
- E** Exhibition/Information Panels
- T** Toilets
- A** Activities
- P** Carpark available
- NW** No Wheelchair Access
- NEW** 1st Doors Open Day
- B** Booking Required

### 01 ST ANDREWS CATHEDRAL • 1816

Designed by Archibald Simpson later Sir Ninian Comper (architects), 28 King Street AB24 5AX



The church contains the national memorial to Samuel Seabury, consecrated first Bishop of America in Long Acre, Aberdeen, on 14th November 1784. Roof heraldry depicts the American States and the Jacobite supporters of the Episcopal Church. Tours on the hour for 20 minutes, except 12 noon when there will be a free 30 minute concert given by the trebles of the Cathedral Choir – no need to book. W|GT|E|T

### 02 ABERDEEN CITADEL SALVATION ARMY

• 1896 James Soutter, 28 Castle Street AB11 5BG

The Citadel is approaching its 140th anniversary and will be opening its refurbished Worship Hall and Café for the day. Guided tours will be available on the day, no need to book just drop in. W|GT|E|T

### 03 ABERDEEN SHERIFF COURT • 1867-73

Peddie and Kinnear, Castle Street AB10 1FY FAMILY FRIENDLY

Enter by the main Court entrance, 2 doors along from the Town House. Tour with an experienced member of court staff talking about the history of the Court building and what happens in the court room, with an opportunity to explore areas of court 1, court 6 and the cells that are normally off limits to the public.

Take pictures, try on gowns and maybe even handcuffs! Suitable for all ages with lots for kids to do. Tours start at 10.00am and will run throughout the day, for 30 minutes at a time – no need to book.

W|E|T

### 04 ABERDEEN TRADES UNION COUNCIL (ATUC)

John Londragan House, 22a Adelphi AB11 5BL

Formed in 1868 ATUC has played an important role in Aberdeen's radical history. A range of artefacts will be on display, including artwork and archive documents, providing a fascinating insight into the history of activism in Aberdeen. Guided tours available – no need to book, just drop in. W|E|T

### 05 ADVOCATES LIBRARY • 1869

James Matthews, Concert Court, off Broad Street AB10 1BS



On the first floor there is one of the finest private law libraries in the country with the original decorative scheme by Arthur Clyne. It also features a stained glass window Cottier & Co. NW

### 06 ST MARGARET'S • 1890

Sir Ninian Comper, Gallowgate AB25 1EA



A feature of Comper windows and statues is that he often used family likenesses in the faces portrayed. Take your time to look around soaking up the atmosphere left by years of prayer in this place. Go outside and enjoy the garden.

 Visit [www.doorsopendays.org.uk](http://www.doorsopendays.org.uk) for up-to-date information.

**07 NORTH EAST SCOTLAND COLLEGE (NEScol)**  
Gallowgate AB25 1BN



Discover the wonders of the fascinating night sky and experience the galactic journey from the beginning of our life and solar system into the Milky Way Galaxy and beyond in the Planetarium. Take a tour of the Creative Industries Department where music, drama, photography, TV, Radio & Sound Engineering students learn their craft. Look inside the Hair and Beauty department and finish up at the Travel Suite and a complimentary refreshment at the fabulous training restaurant. Please enter from Loch Street entrance. Tours start at 10am, 11am and noon, lasting approx. 2 hours. Tours include the Planetarium and refreshments. Limited opening 10am to 2pm – no need to book. **W|GT|E|T**

**08 ROBERT GORDON'S COLLEGE • 1732**  
Robert Adam, Schoolhill AB10 1FE

This is a co-educational independent day school for children aged 3-18 years. The Auld Hoose will showcase the original stone staircase and the historic Governors' Room. Visitors will see the modern Junior School. The Craig Centre for Performing Arts and The Wood Foundation Centre for Science and Technology. **W|E|T**

**09 ST MARY'S CHAPEL • Mid 15th century**  
Correction Wynd AB10 1JZ

The Chapel dates back to circa 1450 and features a stone vaulted ceiling, carved wood of 16th and 17th century, grave slabs, stained glass and other features. Wardens will be on hand. **NW|GT**

**10 KIRK OF ST NICHOLAS UNITING • 11th century onwards** Various architects  
Union Street AB10 1JZ

The Mither Kirk is one of the most historically important buildings in Aberdeen, with some surviving elements from the late 12th century in Collison's Aisle. Since the reformation St Nicholas has consisted of two churches: the West and the East. The 1741 James Gibbs designed West Kirk will be open on Doors Open Day as will the central areas. **W (partial)|GT|E|T**

**11 TS SCYLLA** Pocrá Quay, Footdee AB11 5DG

Located at the quayside, TS Scylla is a series of linked 1930s Nissen huts. The building was originally used by the barrage balloon unit during WW2 before becoming the home of Sea Cadets Aberdeen. The Sea Cadets will be providing short tours of the facilities as well as displays on the history of the building and the Unit, and information on Sea Cadet activities. Guided tours will be available as required – no need to book, just drop in. **W (limited)|GT|E|T**

**12 CARMELITE HOTEL**  
Stirling Street AB11 6JU

Boasting many fine gothic style features and stained-glass windows, the building is situated in the approximate area of the medieval Carmelite Friary. Dr Chris Croly will give a talk at 1.30pm on the history and archaeology of the area. No need to book, just drop in.

The hotel is open for lunch and afternoon tea – bookings as normal. **W|E|T|A**

**13 ST JOHN THE EVANGELIST EPISCOPAL CHURCH AND MOSQUE • 1849-51**  
Thomas Mackenzie, Crown Terrace AB11 6NG

The north aisle was added in 1898 and the tower in 1913. Note the great east window and memorial nave windows, the Sir Ninian Comper reredos and 16th century font from Kinkell Church, Inverurie. The church and adjoining mosque will all be open. **W|E|T**

**14 FREEMASONS HALL • 1910**  
Jenkins and Marr, Crown Street AB11 6EX

Possibly the finest, purpose-built building devoted entirely to Freemasonry within the Scottish Constitution. Conducted tours will be organised as well as opportunities to wander freely in the company of members. Tea and coffee will also be available free. **W (ground floor)|GT|E|T**

**15 QUAKER MEETING HOUSE • 1903**  
Dr William Kelly, Crown Street AB11 6HJ

The Quaker Meeting House was opened in 1903 & was designed by Dr William Kelly. It is the only purpose built Quaker Meeting House still in use in Scotland. It features the plain simplicity of a typical QMH with the Elders' Bench. **W|E|T**

**16 CROWN TERRACE BAPTIST CHURCH • 1870**  
James Souttar, Crown Terrace AB11 6HE

Crown Terrace Baptist Church, established in 1839, was the first Baptist Church in Aberdeen. Located in the heart of the City and surrounded by many licensed premises among others, the building was extensively renovated in 2008 to provide a main church area that is accessible to all and suitable for many uses. **W|E|T**

**17 ST MARY'S CATHEDRAL • 1849-51**  
Thomas Mackenzie, Huntly Street AB10 1SH



St Mary's Cathedral houses many interesting features including several stained-glass windows, two large mural paintings on either side of the main sanctuary and recent icon of the Merciful Christ. Guided tours will be available as required – no need to book, just drop in. **W|GT|E|T**

**18 GILCOMSTON CHURCH • 19th century**  
Union Street AB10 1TP

Another chance to explore a building that's been a landmark on Union Street for over 150 years. From the massive 'wheel-window' and impressive pipe organ to the comfortable seating and the presentation screens. **W|T**

**19 CHILDLINE ABERDEEN**  
3rd Floor, Ruby House, Ruby Lane AB10 1QZ

Childline is a free and confidential helpline service delivered by the NSPCC. Everything they do protects children today and prevents abuse tomorrow. They exist to fight for every childhood. Come and meet with the team who will show you around the Counselling Centre and enjoy some home bakes. **W|T|A**

**20 GIRLGUIDING ABERDEEN HEADQUARTERS**  
45 Victoria Street AB10 1UX

Girlguiding Aberdeen is part of Girlguiding UK – the largest voluntary organisation for girls and women in the UK. They are fortunate to have their own premises in the west end for the use of all members. Tours will be available on request. Please enter from Victoria Street or car park at Thistle Lane. **W (limited)|GT|E|T|P**

**21 ALBYN SCHOOL • 1879**  
Matthews and Mackenzie, Queens Road AB15 4PB



The school occupies four 19th century merchant houses on Queen's Road and retains a number of architectural features. There will be displays of memorabilia relating to the school's history and opportunities to have a guided tour as well as some musical performances. **W|GT|E|T**

## 22 ST MARGARET'S SCHOOL FOR GIRLS

17 Albyn Place AB10 1RU



Set inside an adapted series of granite buildings this school dates from 1846. Take this rare opportunity to tour the buildings and learn about the oldest continuously operating girls' school in Scotland. Limited Open 10am to 2pm.

W|T

## 23 THE BRIDGE CLUB

14 Rubislaw Terrace AB10 1XE

**NEW**

The premises at 14 Rubislaw Terrace were established as a Bridge Club in 1933. Eighty-five years on, the former members club is now a registered charity organisation and the building accommodates other brain teasing sports such as Scrabble and Chess, aiming to be a hub of such games for all. Guided tours available – no need to book, just drop in.

GT|E|T

## 24 RUBISLAW PARISH CHURCH • 1873-5

Marshall Mackenzie, Beaconsfield Place AB15 4YD

An 1875 sandstone church of fine Gothic design featuring intricate woodwork. The 1890 manual 'Father' Henry Willis organ will be played at intervals throughout the day with lunchtime music from the Society of Recorder Players. Refreshments available in the Church Centre on Beaconsfield Place, see entry 25 below.

W|E|T

## 25 RUBISLAW CHURCH CENTRE

Beaconsfield Place AB15 4AB

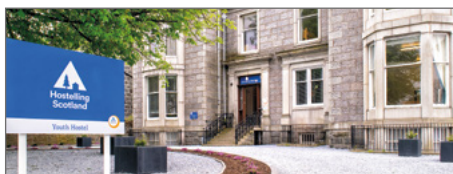
Opened in 1971, Rubislaw Church Centre is a multi-purpose building used extensively by community and church groups. Information about the various groups will be on display as well as people to chat with. Refreshments will be served all day in the lounge.

W|E|T

## 26 ABERDEEN YOUTH HOSTEL

8 Queens Road AB15 4ZT

**NEW**



This hostel is set in what was once the boarding house for Aberdeen Grammar School. It is a King George VI memorial hostel. Guided tours will be available – no need to book, just drop in.

GT

## 27 TRINITY HALL • 1967

Mackie, Ramsay and Taylor, Holburn Street AB10 6DA

This is the third Trinity Hall to be occupied by the Seven Incorporated Trades of Aberdeen. The current building (1967) re-uses the traceried windows of its predecessor but otherwise the architecture is very much of its period. The interior is very dramatic and contains many furnishings and artefacts that were used in all three Halls. Guided tours as required, no booking necessary. Refreshments will be available free.

W|GT|E|T

## 28 FERRYHILL PARISH CHURCH • 1873

Duncan McMillan, Fonthill Road AB11 6UD

Designed in the early Gothic Style, includes the Piper Alpha Memorial Window designed by Jane Bayliss and official Aberdeen City Commemoration Book, 51st Signals Memorial in the Memorial Chapel, plus WW1 commemorative windows and other excellent stained glass. Walk around with an audio guide or information sheet or request a guided tour.

W|GT|T

## 29 ALBURY SPORTS CENTRE

Albury Road AB11 6TN

The centre is celebrating its 90th anniversary in 2019. Come along to explore the building and what it has to offer, find out how it all began, take a tour and see the exhibitions. No need to book, just drop in.

W|GT|E|T|P

## 30 INSTITUTE OF MEDICAL SCIENCE • 1996

David Murray Associates, Ashgrove Road West AB25 2ZD

The University of Aberdeen's Institute of Medical Sciences accommodates over 400 scientists and research staff. Stands in the atrium will showcase hands-on science demonstrations and activities. Techfest will also be running family friendly activities. The central atrium, ground floor and second floor labs are open with guided tours at 10.30am, 1.00pm and 2.30pm. No need to book, just drop in. Staff car park free for all to use.

W|GT|E|T|P

## 31 ROWETT INSTITUTE OF NUTRITION

AND HEALTH • 2016 Halliday, Fraser, Munro, Ashgrove Road West AB25 2ZD



Over its 100-year history The Rowett has played a key role in shaping the health of the UK. From showing the health benefits of providing free milk to school children to underpinning the rationing system, The Rowett has always been at the forefront of nutrition research. In the new institute building the focus is now on understanding the molecular basis of human health. Come and explore the atrium, Human Nutrition Unit and labs of this state-of-the-art new science building and hear some of the scientists explain their cutting-edge research. Staff car park free for all to use.

W|GT|E|T|A|P

## 32 ABERDEEN MEDICO-CHIRURGICAL

SOCIETY Polwarth Building, Foresterhill AB25 2ZH

Founded in 1789 the Society plays an important role in the medical community in Aberdeen. Come and explore the library and artefacts relating to the history of medicine in the North East.

E|T

## 33 GRAMPIAN HOSPITAL RADIO

Westburn Cottage, Aberdeen Royal Infirmary (ARI), AB25 2ZN

The hospital radio station is located in a refurbished cottage in the grounds of Aberdeen Royal Infirmary and provides a variety of programming including a nightly request show to the patients of ARI. There is a second station located in the same building for broadcasting to the patients of Royal Aberdeen Children's Hospital with programming more suited to their tastes. Tour the studios and hear the history of the station which has broadcast to ARI for over 35 years. Tours as required – no need to book, just drop in.

W|GT|T

## 34 ABERDEEN DENTAL INSTITUTE

Cornhill Road, Aberdeen AB25 2ZD

A dental school in the Grampian Region of Scotland was established to help to provide a suitably qualified dental workforce, not only in relation to the country's needs, but particularly in relation to the dental needs of the population in the North of Scotland. Come and view the purpose-built teaching facilities which enable students to learn using dental simulation, state of the art patient clinics and dental teaching laboratories. Get involved in interactive sessions and displays, with current students and staff on hand with demonstrations and information. Limited opening: 11am to 4pm

W|E|T|P

## 35 ROYAL CORNHILL HOSPITAL, ART ROOM

Cornhill Road AB25 2ZH

Grampian Hospitals Art Trust is an arts organisation which exists to enhance the wellbeing and experience of all who spend time in hospital. The Lochhead Day Unit's art room will be open for drop in sessions and there will be a display of artwork in the main corridor.

W|E

**DONT FORGET!**

Follow us on [www.facebook.com/aberdeendoorsopenday](https://www.facebook.com/aberdeendoorsopenday)

**36 CHURCH OF JESUS CHRIST OF LATTER DAY SAINTS • 1967**

North Anderson Drive AB15 6DD

The church building was designed in Salt Lake City and must have looked very American when it was first built. It has unfortunately lost its original copper roof but its elegant needle-topped spire is a familiar landmark on North Anderson Drive. On Doors Open Day the chapel and most of the rest of the building will be open including the Family History Centre.

W|E|T

**37 ABERDEEN TREASURE HUB**MUSEUM CENTRE • 2017  
Granitehill Road AB16 7AX

B



See behind the scenes of this purpose-built storage facility for Aberdeen Art Gallery & Museums' extensive collections of decorative art, costume, painting, sculpture, and objects relating to Aberdeen's archaeology, maritime history, science and industry. All welcome, suitable for children aged 5+ if accompanied by an adult.

Tours must be booked in advance. Tours will run at: 10.15am, 10.30am, 11.00am, 11.30am, 12pm, 12.30pm, 1.00pm, 1.30pm, 2.00pm, 2.30pm, 3.00pm. Book via Eventbrite, search for Doors Open Day Aberdeen.

W|GT|E|T

**38 BEACH BALLROOM • Opened 3rd May 1929**

Beach Promenade AB24 5NR

The Beach Ballroom is celebrating its 90th year. Holding a place in the hearts of many Aberdonians since it was built in 1929, the Beach Ballroom has seen many changes – not only to its interior but also with regards to events. Today, dance competitions still play a role in the entertainment programme along with many other events such as Christmas parties, wrestling, boxing, weddings and corporate events. So why not come along to see what facilities are on offer as well as taking a stroll down memory lane with a nostalgic exhibition. Tea and coffee available, free. Tours on the half hour – no need to book, just drop in.

W|GT|E|T

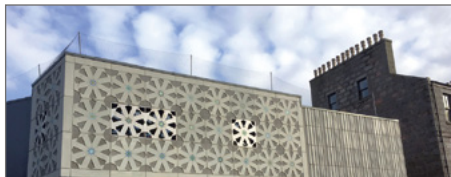
**39 ABERDEEN CENTRAL COMMUNITY FIRE STATION**Mounthooly Way AB24 3ER  
FAMILY FRIENDLY

The Central Fire Station is one of four fire stations located within Aberdeen City. The station was opened in 1998 and further converted in 2016 to house the Aberdeen City LSO HQ. This is a great chance to explore the station and get Fire Service Heritage information, and Fire Safety Information, take a guided tour and view a range of vehicles and equipment. No need to book, just drop in.

W|GT|E|T|A

**40 MASJID ALHIKMAH AND COMMUNITY CENTRE**

Nelson Street AB24 5ER



Take the opportunity to tour this brand new purpose built mosque and community centre. There will also be exhibitions on Islam and the chance to observe live prayers. Refreshments will be available free.

W|GT|E|T

**41 KING'S CHAPEL • 1500 onwards**

College Bounds AB24 3FX



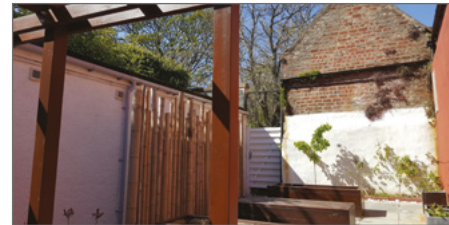
The University was founded in 1495 and the chapel is the oldest surviving building. Inside are the finest surviving pre-Reformation choir stalls and screen in Scotland. Join art historian Lindsey Vyse for tours of the chapel at 11.30am, 1pm and 2.30pm, lasting around one hour.

No need to book.

W|GT|P

**42 CONFUCIUS INSTITUTE • 18th century**

High St AB24 3EE



The Institute provides Chinese language teaching and cultural events to the North East Scotland community. It acts as a linguistic and cultural bridge, promoting knowledge exchange between China and the people of North East Scotland and serving as the first port of call for information on China. The building has had many uses in its long history, including a museum and a bank, and its courtyard bamboo garden is one of Old Aberdeen's best kept secrets. Experience a Chinese tea ceremony or try your hand at Chinese craft and games. Suitable for children.

W|T|A|P

**43 SIR DUNCAN RICE LIBRARY**

Bedford Road AB24 3AA

The Special Collections Centre and NHS Grampian Archives will have on display items from their rich and historic archive and printed book collections. There will also be guided tours of the new exhibition 'Walking with Birds' at regular intervals throughout the day. No need to book just drop in.

W|GT|E|T|P

**44 ELPHINSTONE INSTITUTE**

MacRobert Building, 581 King Street AB25 5UA

Established in 1995 to research the culture of the North East and North of Scotland, the Elphinstone Institute welcomes all to explore our archives, library, research, videos, recordings, publications and more. At 11.30am and 2.30pm, we'll screen our 30-minute film 'North-East Scots (Doric): Past, Present and Future', exploring the origins, current state, and future of the Mither Tongue.

W|E|T

**45 THE CRUIKSHANK BOTANIC GARDEN • 1898**

St Machar Drive (entrance from The Chanonry) AB24 3UU



There have been gardens and parkland on the site since at least the late 17th century. The Botanic Garden, founded with a bequest from Miss Anne Cruickshank, is an educational resource and a beautiful and secluded amenity for University of Aberdeen staff and students and the general public. Join Curator Mark Paterson for a guided tour at either 11.00am or 1.00pm. Tours will last for an hour and a half. No need to book.

W available in Zoology Building, see 46 overleaf | T



**46 ZOOLOGY MUSEUM • 1969**  
Mackie, Ramsay and Taylor, Tillydrone Avenue  
AB24 2TZ



The Zoology Museum is the only zoological museum in the region and boasts one of the largest collections in Scotland including animals of the world, from protozoa to whales.

W (ground floor)|E|T|P

**47 ST MACHAR'S CATHEDRAL**  
The Chanonry AB24 1RQ



Famed for its unique heraldic ceiling and glorious stained glass, this early 16th century cathedral is built on a site of worship dating back 1500 years. Visitors can view original records from the 14th century, try ringing the Cathedral bells, and enjoy live music. Refreshments available free. Tours lasting 15 minutes will be available as required, no need to book.

W (not bell tower or charter room)|GT|E|T|P

**48 ABERDEEN HARBOUR EXTENSION PROJECT**  
Visitor Centre, Walker Park AB11 8QX



Visit the centre to gain an insight into one of the most ambitious marine engineering projects in Scotland for many decades. Visitors will be able to learn about the background of the development, the different construction activities underway, the environmental protection measures being deployed, and some of the history of the area. Furthermore, you will have the opportunity to see real-time works from a privileged position.

Limited Opening 10am to 3pm. Tours will start on the hour from 10am to 2pm. To book onto a tour email: [contactusAHEP@dragados.com](mailto:contactusAHEP@dragados.com) or call on 0800 471 4829.  
W|GT|E

**49 OLD TORRY COMMUNITY CENTRE**  
2 Abbey Place AB11 9QH

This volunteer run community centre in Old Torry organises varied activities for local people, and has a collection of artefacts, books, films and photos of Torry and its peoples over many years, so pop in to learn about the history of Torry, its buildings, people and its industries.

W|T

**50 VICTORIA ROAD SCHOOL**  
Abbey Road AB11 9PE



The school has recently suffered from fire damage but limited access is available for one day as part of special pre-booked tours. Restoration and community regeneration of the iconic granite buildings is being taken forward in a partnership between Grampian Housing Association and Torry Development Trust. Meet members of the team to learn about their plans for the future of this important historic site. Limited opening 11am to 3pm. Access strictly by pre booked tours: search [www.eventbrite.co.uk](http://www.eventbrite.co.uk) for Victoria Road School. Entry from Abbey Road.

**SPECIAL TALK**

**SATURDAY ONLY**

**52 THE ABERDEEN TENEMENT - ITS PAST, PRESENT AND FUTURE**  
Aberdeen Maritime Museum AB11 8QX

'The Aberdeen Tenement - Its past, present and Future', a series of short talks and a film. As Aberdeen's private stock of flats and traditional tenements is in decline take this opportunity to learn about their unique history and appearance and discover what the way forward is. Starts at 2pm and lasts 1 hour. No need to book.

**MAP KEY (see reverse)**

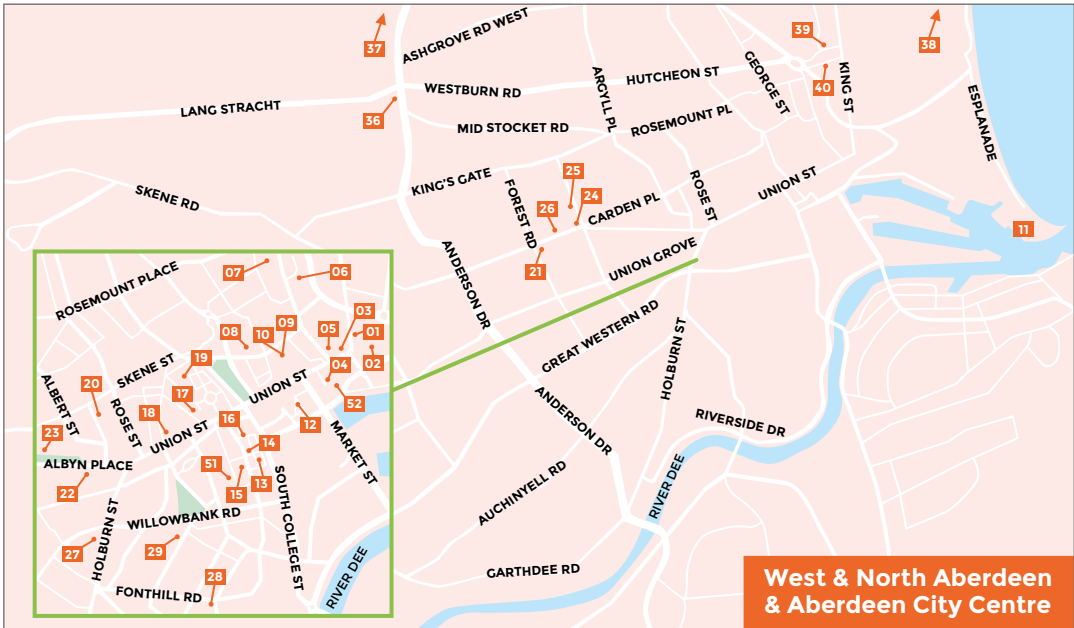
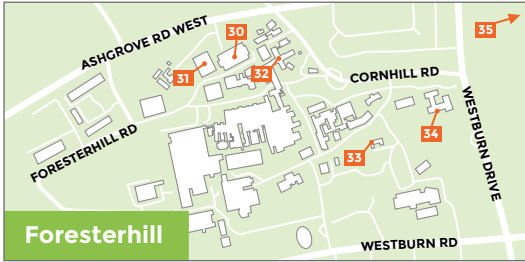
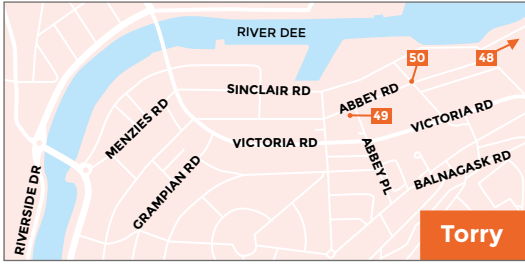
- |  |  |   |
|--|--|---|
| 01 ST ANDREWS CATHEDRAL  | 20 GIRLGUIDING ABERDEEN HEADQUARTERS           | 37 ABERDEEN TREASURE HUB MUSEUM CENTRE            |
| 02 ABERDEEN CITADEL SALVATION ARMY                             | 21 ALBYN SCHOOL                                | 38 BEACH BALLROOM                                 |
| 03 ABERDEEN SHERIFF COURT                                      | 22 ST MARGARET'S SCHOOL FOR GIRLS              | 39 ABERDEEN CENTRAL COMMUNITY FIRE STATION        |
| 04 ABERDEEN TRADES UNION COUNCIL (ATUC)                        | 23 THE BRIDGE CLUB                             | 40 MASJID ALHIKMAH AND COMMUNITY CENTRE           |
| 05 ADVOCATES LIBRARY   | 24 RUBISLAW PARISH CHURCH                      | 41 KING'S CHAPEL                                  |
| 06 ST MARGARET'S   | 25 RUBISLAW CHURCH CENTRE                      | 42 CONFUCIUS INSTITUTE                            |
| 07 NORTH EAST SCOTLAND COLLEGE                                 | 26 ABERDEEN YOUTH HOSTEL                       | 43 SIR DUNCAN RICE LIBRARY                        |
| 08 ROBERT GORDON'S COLLEGE                                     | 27 TRINITY HALL                                | 44 ELPHINSTONE INSTITUTE                          |
| 09 ST MARY'S CHAPEL  | 28 FERRYHILL PARISH CHURCH                     | 45 THE CRUIKSHANK BOTANIC GARDEN                  |
| 10 KIRK OF ST NICHOLAS UNITING                                 | 29 ALBURY SPORTS CENTRE                        | 46 ZOOLOGY MUSEUM                                 |
| 11 TS SCYLLA   | 30 INSTITUTE OF MEDICAL SCIENCE                | 47 ST MACHAR'S CATHEDRAL                          |
| 12 CARMELITE HOTEL   | 31 ROWETT INSTITUTE OF NUTRITION AND HEALTH    | 48 ABERDEEN HARBOUR EXTENSION PROJECT             |
| 13 ST JOHN THE EVANGELIST SCOTTISH EPISCOPAL CHURCH AND MOSQUE | 32 ABERDEEN MEDICO-CHIRURGICAL SOCIETY         | 49 OLD TORRY COMMUNITY CENTRE                     |
| 14 FREEMASONS HALL   | 33 GRAMPIAN HOSPITAL RADIO                     | 50 VICTORIA ROAD SCHOOL                           |
| 15 QUAKER MEETING HOUSE  | 34 ABERDEEN DENTAL INSTITUTE                   | 51 ABERDEEN SYNAGOGUE AND JEWISH COMMUNITY CENTRE |
| 16 CROWN TERRACE BAPTIST CHURCH                                | 35 ROYAL CORNHILL HOSPITAL                     | 52 ABERDEEN MARITIME MUSEUM                       |
| 17 ST MARY'S CATHEDRAL   | 36 CHURCH OF JESUS CHRIST OF LATTER DAY SAINTS |   |
| 18 GILCOMSTON CHURCH   |  |   |
| 19 CHILDLINE ABERDEEN  |  |   |

**SUNDAY ONLY**

**51 ABERDEEN SYNAGOGUE AND JEWISH COMMUNITY CENTRE**  
74 Dee Street AB11 6DS

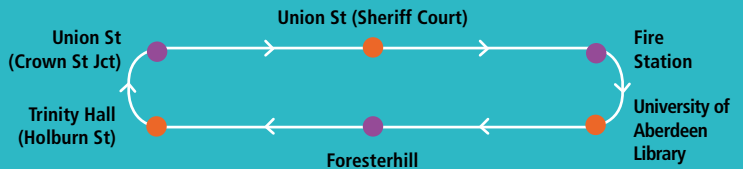
This is a traditional Synagogue serving the Grampian and North East region. There is no permanent Rabbi, but the centre still hosts a series of social, cultural and religious events throughout the year. The Synagogue is the cornerstone of spiritual life for many local Jewish and non-Jewish families and friends. Visitors will tour the Synagogue and gain an insight into Judaism. Tea and coffee will be available free in the Communal Hall and guided tours will be as required - no need to book, just drop in.

# Maps (Key overleaf)



## FREE HOP ON/OFF BUS

Buses on the hour and half hour leaving from Union Street (Sheriff Court). Timetables can be found online, visit:



[www.facebook.com/aberdeendoorsopenday](https://www.facebook.com/aberdeendoorsopenday) [www.doorsopendays.org.uk](http://www.doorsopendays.org.uk)